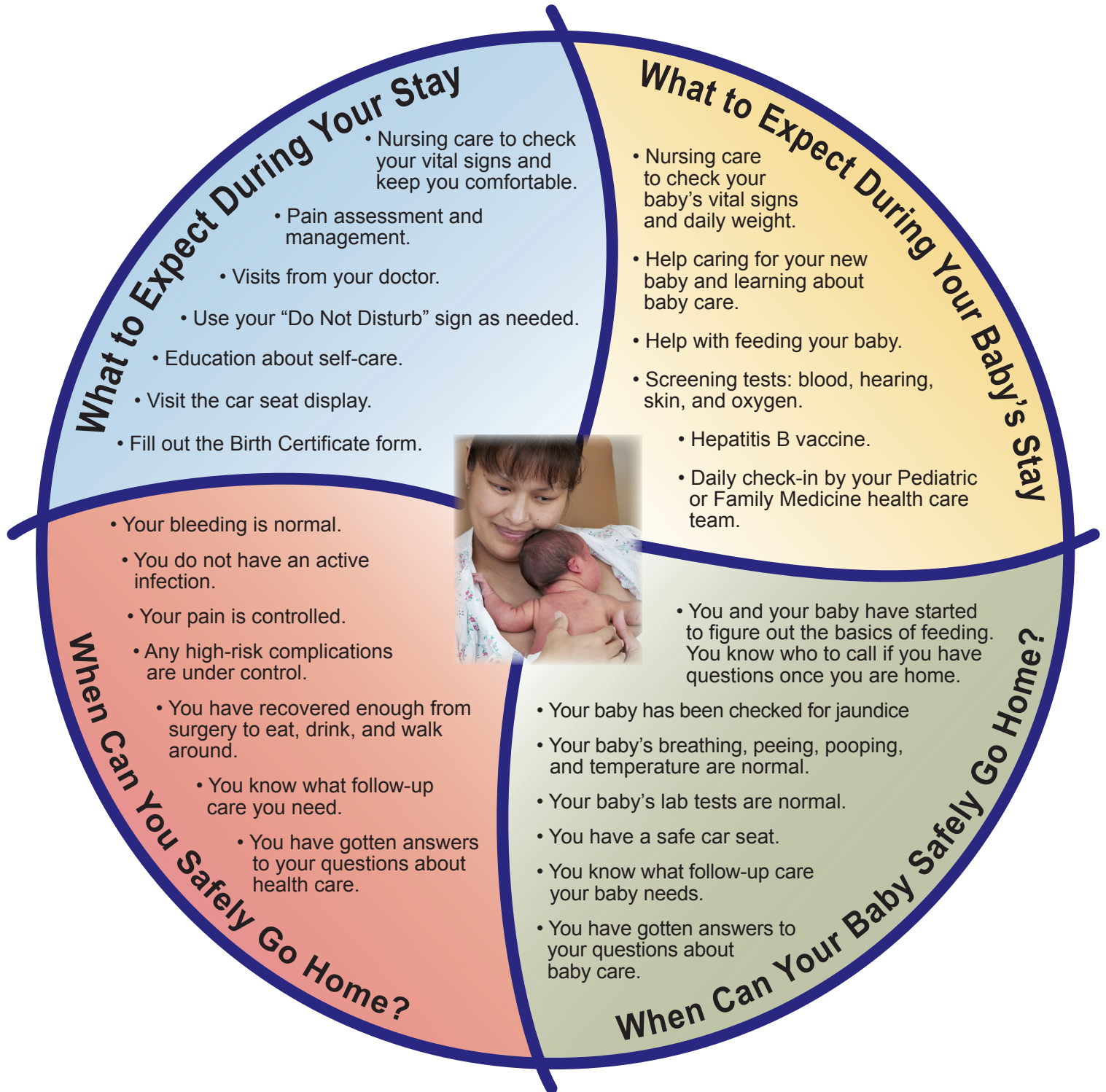


After You've Had Your Baby

This chart tells you what to expect during your stay in the hospital and when you and your baby can safely go home.



If your baby is in the Progressive Care Nursery (PCN) or Neonatal Intensive Care Unit (NICU), please talk with your nurses and pediatricians about what to expect.



Created in partnership with
the Pregnancy and Childbirth
Advisory Council

© University of Washington Medical Center
Pub. 07/2007, 04/2008, 06/2012, 12/2012

UW Medicine
UNIVERSITY OF WASHINGTON
MEDICAL CENTER