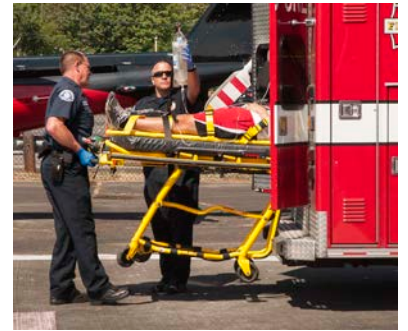


## Ambulance Fees

### *Who will pay?*

Patients may ride in an ambulance when they come to or leave UW Medical Center (UWMC). Some ambulance fees are covered by our hospital. Other ambulance fees must be paid by the patient or their insurance. The “rules” on who pays these fees depend on the reason for transport and the type of health insurance you have.



Most times, insurance covers the cost of your first ambulance trip to the hospital. If you arrive at UWMC but need to receive special care at a different facility, insurance usually covers the cost of the ambulance ride to that facility. An example of this is when a patient needs care at Harborview Medical Center for a stroke or severe burn.

If an ambulance is needed when you are ready to be discharged from the hospital, insurance often covers that fee. You may need to pay for part of these costs, depending on your insurance plan.

UWMC covers the ambulance fees when we choose to transport a patient to another UW Medicine hospital for reasons other than specialty care. This might be when we move a patient from our Montlake campus to our Northwest campus. We also cover ambulance fees if we need to transport an *inpatient* (a person who is staying in our hospital), to an outside facility for a procedure or test.

### **When the Facility Pays**

When the facility pays the ambulance fees, the ambulance company will bill the facility that ordered the transport.

### **When the Patient Pays**

- If you have health insurance, the ambulance company will bill your insurance. You may need to pay deductibles or coinsurance.
- If your insurance does not cover transport, you must pay the full amount billed by the ambulance company.
- UWMC cares about your health. Let us know if you have any problems paying for the level of care you need.

### **Questions?**

If you have a question about ambulance fees, please ask your provider or nurse. They may refer you to a social worker for more information.

UWMC Social Work and Care Coordination: 206.598.4370