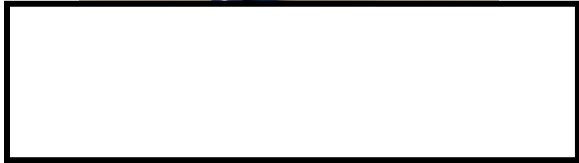


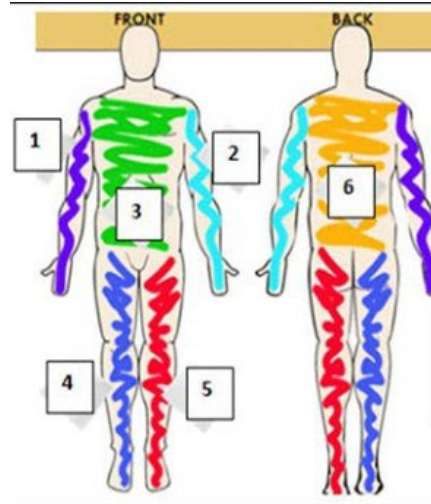
What is wrong with each picture?



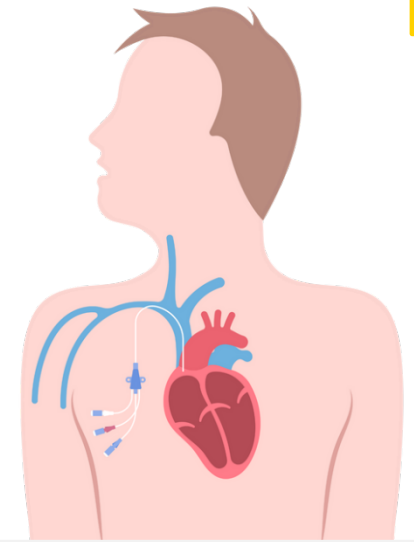
Shower Checklist



- 1** Cover the hubs and ports with parafilm wax.
- 2** Cover the dressing with plastic AquaGuard.
- 3** Use Chlorhexidine (CHG) 4% body wash in the shower.
- 4** After you shower, remove the AquaGuard and parafilm wax. Wipe down your skin and the catheter tubing with one CHG wipe.
- 5** For bed baths, a nurse can help you use 2% CHG wipes (one wipe per area, see image below).



© University of Washington Medical Center
 Published PFES: 2023
 Clinician Review: 06/2023
 Reprints on Health Online: <https://healthonline.washington.edu>



Central Line Care and Infection Prevention

Review this brochure with your healthcare provider.

Your healthcare provider is:

Their phone number is:

*Created by Keaton Hambrecht BSN, RN.
 MSN candidate, Aspen University.*

Circle the Signs and Symptoms of Infection

Pus or drainage

Redness

Rash

Arm swelling

Bleeding at the exit site

Fever

Bruising



If you have any of these signs or symptoms, what should you do?



Frequently Asked Questions

When in doubt, ask!



Q: *What should I do if I accidentally get my dressing wet?*

A:

Q: *Why do I need to shower or bathe with chlorhexidine (CHG) products every day?*

A:

Q: *What should I do if my catheter breaks, leaks, or is missing a disinfectant cap?*

A:

Q: *Can I go longer than 7 days before changing my central line dressing?*

A:

What to do if:

You go to the bathroom or touch something dirty?

Wash your hands with alcohol-based soap for 20 seconds.



You want to shower?

Cover the dressing with AquaGuard plastic. Use parafilm to cover the hubs and ports.



Your skin is itchy under the dressing?

Keep the dressing in place. Talk to your nurse about other dressing options.



What is wrong with each picture?



Loose, peeling dressing.

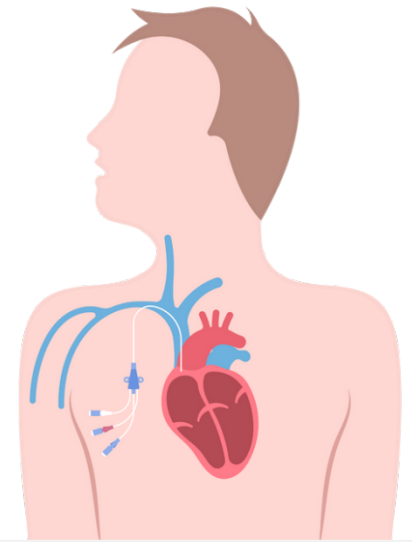
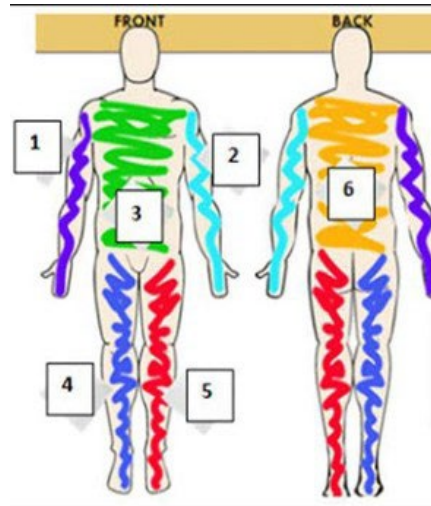


Missing disinfectant caps.

Shower Checklist



- 1** Cover the hubs and ports with parafilm wax.
- 2** Cover the dressing with plastic AquaGuard.
- 3** Use Chlorhexidine (CHG) 4% body wash in the shower.
- 4** After you shower, remove the AquaGuard and parafilm wax. Wipe down your skin and the catheter tubing with one CHG wipe.
- 5** For bed baths, a nurse can help you use 2% CHG wipes (one wipe per area, see image below).



Central Line Care and Infection Prevention (Answer Key)

This is the answer key for the Central Line Care and Infection Prevention interactive brochure.

Providers: Use this key as a reference when using the interactive brochure as a teaching tool with patients. The answers are highlighted.

Created by Keaton Hambrecht BSN, RN. MSN candidate, Aspen University.

Circle the Signs and Symptoms of Infection

Pus or drainage

Redness

Rash

Arm swelling

Bleeding at the exit site

Fever

Bruising



If you have any of these signs or symptoms, what should you do?



Frequently Asked Questions

When in doubt, ask!



Q: What should I do if I accidentally get my dressing wet?

A: Tell your nurse right away. You will need to have your dressing changed.

Q: Why do I need to shower or bathe with chlorhexidine (CHG) products every day?

A: CHG kills bacteria on the skin and protects you from infection.

Q: What should I do if my catheter breaks, leaks, or is missing a disinfectant cap?

A: Tell your nurse right away. Never use scissors near your central line. Ask your nurse to put a disinfectant cap on your central line if the cap is missing.

Q: Can I go longer than 7 days before changing my central line dressing?

A: The dressing's protection starts to lessen after 7 days. The dressing must be changed every 7 days or when it becomes loose, dirty, or wet.

What to do if:

You go to the bathroom or touch something dirty?

Wash your hands with alcohol-based soap for 20 seconds.



You want to shower?

Cover the dressing with AquaGuard plastic. Use parafilm to cover the hubs and ports.



Your skin is itchy under the dressing?

Keep the dressing in place. Talk to your nurse about other dressing options.

