

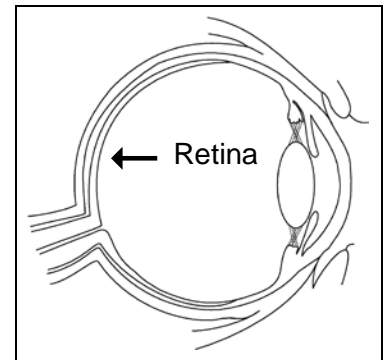
Electro-oculogram (EOG)

What you need to know

An electro-oculogram is a test that studies the electrical charge across your eye and how it changes in darkness and in light. EOGs are done by a technologist, and the findings are looked at later by a doctor.

What is an EOG?

An EOG is a test that looks at how parts of your *retina* (the nerve layer in the back of your eye) work and how it changes in darkness and in light.



An EOG test looks at the nerve layer in the back of your eye, called the retina.

How do I prepare?

- Make plans for someone to drive you home after the test. You cannot drive yourself.
- Do **not** wear eye makeup. Eye makeup can cause an infection or injury to your eye.
- You may eat and take your regular medicines before and after the test.

How does the test work?

- Your *visual acuity* (how well you see) will be tested.
- The technologist will place drops in your eyes to *dilate* your pupils. This makes your pupils larger.
- You will then wait for your pupils to dilate. This can take up to 45 minutes.
- After your pupils are dilated, the technologist will rub a gel onto your skin at certain spots near your eyes and then attach small metal discs (*electrodes*).

- You will rest your chin in front of an open, globe-like, machine. You will move your eyes side to side, watching 2 small lights as they move in the machine. This test will be done for 15 minutes in the dark, then 15 minutes in the light.
- The EOG usually takes about 2 hours. This includes the time it takes for your pupils to dilate.
- If you are having an ERG test on the same day as your EOG, plan to be at the hospital for about 4 hours.

After the Test

- Your pupil(s) may stay dilated for up to 2 days. Your vision may be blurry during this time.
- Do **not** wear contact lenses for 24 hours.
- After the test, do **not** drive a car, use machines, or do anything else that would be dangerous if you do not see well.

How do I get my test results?

A *neurophysiologist* (a doctor who specializes in conditions of the nervous system) will send your test results to your doctor who referred you to us. Your own doctor will talk with you about your results.

Where will the test be done?

- Your test will be done in Neurodiagnostics, in the 7-East unit of the hospital. Take the Pacific Tower elevator to the 7th floor.
- Please arrive 5 to 10 minutes before your appointment time and check in at our reception desk.
- If you need to reschedule your test, please call 206.598.4211.

How to Find UWMC

UWMC is at 1959 N.E. Pacific St., Seattle, WA 98195. For driving directions, please ask for our handout “Driving Directions and Parking.” You can also find this handout online at:

https://healthonline.washington.edu/document/health_online/pdf/Driving-Directions-Parking.pdf

Questions?

Your questions are important. Call your doctor or healthcare provider if you have questions or concerns.

Neurodiagnostics,
7-East: 206.598.4211