



LOCalizer Tag System

How it works and self-care

What is the LOCalizer Tag system?

The LOCalizer Tag system helps guide your surgeon during breast surgery. It uses tiny *radiofrequency identification* (RFID) Tags. A Tag helps your surgeon find the tissue that needs to be removed.

What is a Tag?

A Tag is about the size of a piece of rice. A Tag can be placed in your breast any time before your surgery. It may be done on the same day as your surgery. The Tag has a plastic cap that helps it stay in place.

How does it work?

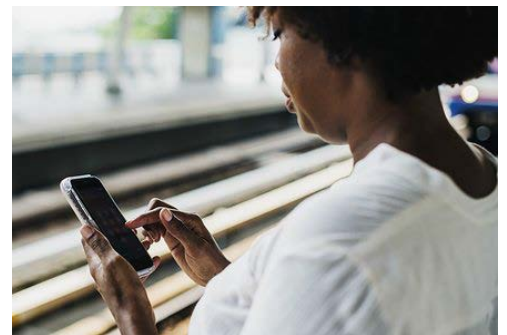
The radiologist will use a needle to insert a Tag in your breast. They will use ultrasound or mammogram to place the Tag at the site that needs to be removed.

During your surgery, your surgeon will use a hand-held wand, about the size of a pencil, to find the Tag inside your breast.

Do I need special care after having a Tag placed?

After a Tag is placed in your breast:

- You may resume normal activity right away.
- **For 24 hours:** To lower the risk of infection, do **not** shower, bathe, sit in a hot tub, swim, or immerse the needle entry site in water.
- After 2 hours, you may remove the bandage over the needle site.
- Please call us if you have:
 - Redness, more soreness or swelling, or drainage at the needle entry site
 - Fever of 100.4°F (38°C) or higher, or chills



Please call us if you have any of these issues after having a Tag placed.

Questions?

Your questions are important. Call your doctor or healthcare provider if you have questions or concerns.

Weekdays from 8 a.m. to 5 p.m., call the Breast Imaging Clinic at UWMC - Northwest: 206.668.1749

After hours and on weekends and holiday, call the Breast Imaging Clinic at UWMC - Northwest: 206.668.6746